



SMART GLADIATOR
MOBILE IOT WEARABLE FOR SUPPLY CHAIN

PREVENTING PALLET BREAKDOWNS

BEST PRACTICES FOR ENSURING STABILITY AND SAFETY IN WAREHOUSE AND SUPPLY CHAIN OPERATIONS



THE CHALLENGE OR PROBLEM

Pallet breakdowns pose significant challenges in the logistics and supply chain industry, leading to various operational and financial issues:

1. Product Damage

Broken or unstable pallets can cause goods to shift or fall during transport, resulting in damaged products. This leads to financial losses, customer dissatisfaction, and potential returns or claims.

2. Operational Delays

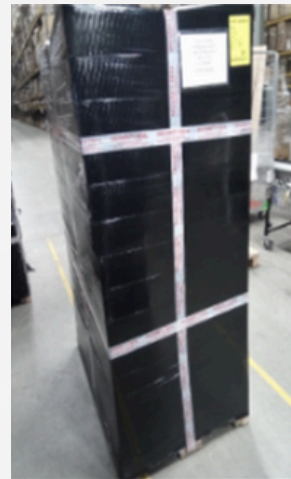
Handling and replacing broken pallets disrupts the workflow, causing delays in order fulfillment and shipping schedules. This can affect overall supply chain efficiency.

3. Increased Costs

The costs associated with pallet breakdowns include not only the replacement of damaged goods but also the expense of purchasing new pallets and additional labor for handling issues.

4. Inefficiency

Time and resources spent dealing with pallet issues divert attention from other critical tasks, leading to reduced productivity and efficiency in warehouse operations.



THE SOLUTION

To address the challenges posed by pallet breakdowns, a comprehensive approach to pallet management is essential. This involves selecting the right type of pallets, ensuring proper handling and storage, and using technology for monitoring and documentation. By implementing these strategies, businesses can mitigate risks, enhance safety, and improve overall operational efficiency.

BEST PRACTICES FOR PREVENTING PALLET BREAKDOWNS

1. Pallet Selection and Inspection

Choose Quality Pallets

Invest in high-quality, durable pallets suited for the weight and type of goods being transported. Avoid using damaged or substandard pallets.

Regular Inspection

Use high-resolution scanners to capture clear, detailed images of each document. Ensure that all parts of the document are visible and legible, and use multiple scans if necessary for multi-page documents.

2. Proper Handling and Storage

Correct Handling Techniques

Train staff on proper pallet handling techniques to avoid damage during loading and unloading processes.

Safe Storage

Store pallets in a dry, well-ventilated area to prevent deterioration from moisture and pests. Ensure pallets are stacked evenly and not overloaded.

3. Stretch Wrapping

Complete Coverage

Stretch wrapping the pallet completely helps hide the contents inside. This reduces the temptation for theft or tampering, especially for valuable items like food and beverages

Proper Application

Use high-quality stretch wrap and ensure that it covers the entire load, including the base, to stabilize the goods and prevent shifting during transit. Apply the stretch wrap with consistent tension to avoid gaps or loose areas.

4. Using Proprietary Tape

Security Identification

Use proprietary tape with the company's name or logo. This helps identify if the pallet has been tampered with, as unauthorized individuals likely won't have the same tape, making it easy to spot any breaches.

Reinforcement

Apply the tape in a crisscross pattern or in multiple layers to reinforce the load and provide additional stability.



5. Labeling the Pallet

Clear Instructions

Labels provide clear instructions on how to handle the pallet, ensuring it is treated properly during transportation and storage. Labels such as “Do Not Double Stack” and “Do Not Break Stretch Wrap” prevent mishandling and damage.

Metadata Tagging

Ensure labels are placed in visible areas and are resistant to wear and tear, ensuring they remain legible throughout the handling and transportation process.

HOW LOADPROOF HELP PREVENT PALLET BREAKDOWNS

LoadProof offers a robust solution to monitor and document the condition of pallets, ensuring proactive management and prevention of breakdowns:

Easy Capture and Upload

LoadProof allows users to easily capture high-quality images of pallets using mobile devices and upload them directly to a secure digital repository. This ensures that the current state of pallets is well-documented.

Organized Documentation

Use LoadProof’s platform to categorize and tag images with relevant metadata, making it easy to track and review the condition of pallets. This helps in maintaining a clear record of pallet conditions over time.

Enhanced Accountability

Maintain a digital record of pallet conditions and handling practices, enhancing accountability and compliance with safety standards. This ensures that any issues are promptly addressed and documented.

Efficient Workflow

Streamline the process of pallet inspection and maintenance, reducing downtime and improving overall operational efficiency. By using LoadProof, the workflow becomes more organized and less prone to errors.

STANDARD OPERATING PROCEDURE ON PREVENTING PALLET BREAKDOWNS USING LOADPROOF

Ensuring pallet stability and safety is crucial in warehouse and supply chain operations. This SOP outlines the steps to effectively prevent pallet breakdowns using LoadProof application.

- Set up and configure your LoadProof account to prepare for documenting shipment seals.
- Pack your products and stack them onto a high-quality pallet.
- Ensure the pallet is stacked evenly and not overloaded to prevent instability.



- Use high-quality stretch wrap to cover the entire load, including the base.
- Apply the stretch wrap with consistent tension to stabilize the goods and prevent shifting during transit.
- Use proprietary tape with your company logo to secure the pallet load.
- Apply the tape in a crisscross pattern or multiple layers to reinforce the load.
- Take photos of all four corners of the wrapped pallet using the LoadProof application.
- Capture additional images of any labels, ensuring they are visible.
- Upload the images to LoadProof's secure digital repository, tagging them with relevant metadata for easy tracking and review.
- Conduct a final inspection to ensure the pallet is stable and secure.
- Store the pallet in a dry, well-ventilated area to prevent deterioration.

READY TO TRANSFORM YOUR WAREHOUSE DOCUMENTATION?

Schedule a demo with LoadProof today to see how our platform can help you prevent pallet breakdowns and enhance your warehouse operations.

By adopting these expert best practices and leveraging LoadProof, warehouses can effectively prevent pallet breakdowns. This not only ensures the safety and integrity of goods but also enhances operational efficiency and reduces costs. Implementing these best practices paves the way for a more reliable and productive warehouse environment.

